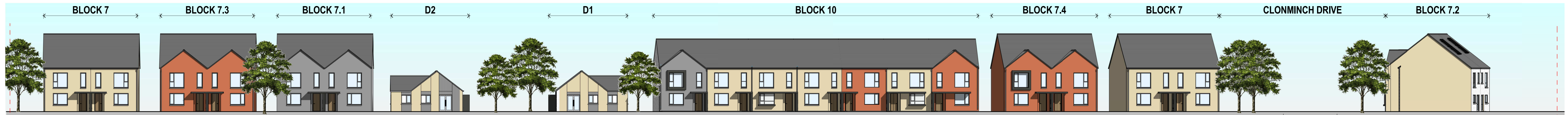
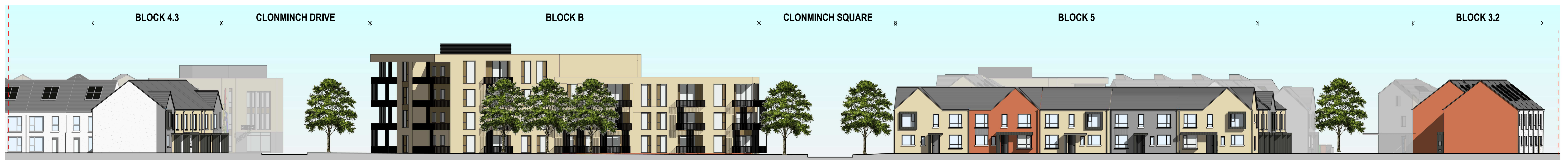




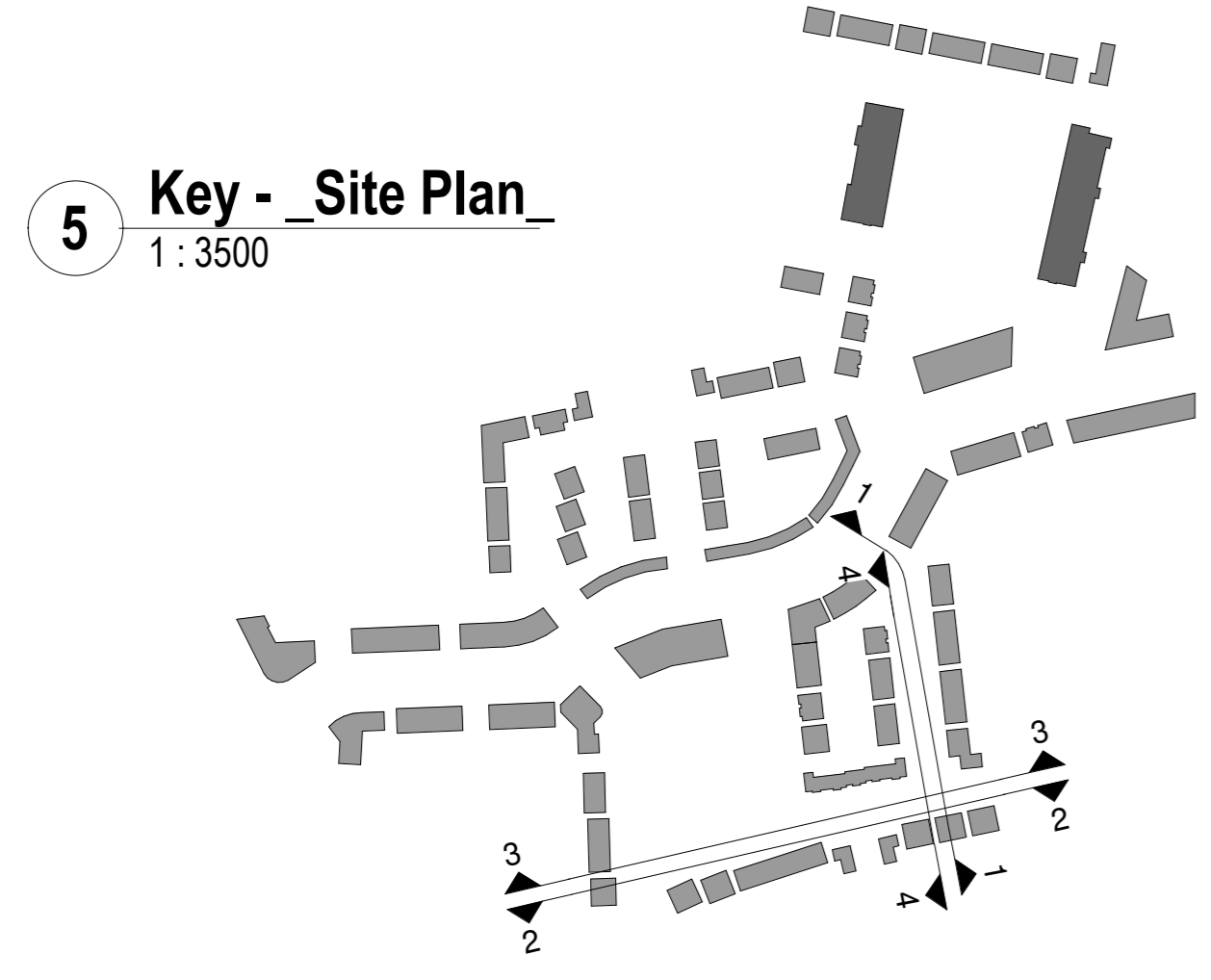
1 Clonminch Drive (East)
1:200



2 Clonminch Drive (South)
1:200



3 Clonminch Drive (North)
1:200



5 Key - Site Plan
1:3500



4 Clonminch Drive (West) Part 01
1:200

CPR Note:
All works to be carried out using proper materials which are fit for the use they are intended and for the condition in which they are to be used.
All materials used in connection with the works to comply with the Construction Products Regulation (EU) No. 305/2011 and the harmonised technical specifications/standards that fall within the remit of the CPR No. 305/2011.



DRAWING TITLE			
CLONMINCH DRIVE ELEVATIONS			
NO.	DATE	BY	CHKD.
01	18/10/2021	AC	AC
PROJECT		CLIENT	
1751 PA-012		STEINERT INVESTMENTS	
SITE		DATE	
BG		18/10/2021	